

HEBRON-BRIDGEWATER REFUSE FACILITY

HEBRON BOARD OF SELECTMEN

JOHN W. MATTHEWS, CHAIRMAN
JOHN W. DUNKLEE, VICE-CHAIRMAN
CURTIS R. MOONEY, SELECTMAN

Composition of the Hebron-Bridgewater Refuse District

Town of Hebron

Town of Bridgewater

LEGISLATIVE BODY

- Town of Hebron
- Town of Bridgewater

GOVERNING BODY

- 3 Hebron Selectmen
- 3 Bridgewater Selectmen

METHOD OF DETERMINING BUDGET FOR THE DISTRICT

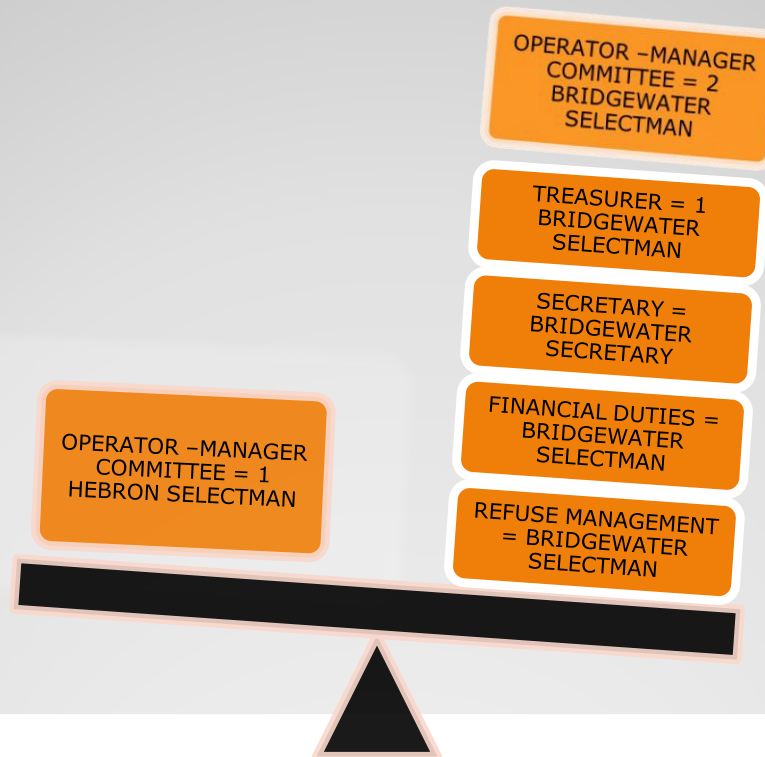
- Governing Body Determines the Budget at the Annual District Meeting
- Member towns must include their assessment in their budget
- Member towns cannot vote to change the budget in any manner

DISTRIBUTION OF MANAGEMENT DUTIES FOR THE DISTRICT

GOVERNING BODY

3 HEBRON SELECTMEN

3 BRIDGEWATER SELECTMEN



TERMS AND DEFINITIONS

1. Refuse District
The entire facility – Land, Buildings, Equipment, Etc...
2. Incinerator
The oven or receptacle for burning household waste
3. Dumpster
Containers for land fill destination
4. C&D
Construction and Demolition Materials
5. Recycling
Sorting according to materials and sold to vendors

PROBLEMS WITH THE CURRENT SITUATION

- Current agreement was instituted in 1976
 - No provision for a tie breaker
 - No provision for withdrawal from the district
 - Bridgewater has taken control of everything



CURRENT FINANCIAL SITUATION

- Hebron has repeatedly demanded control over the finances to no avail
- Financial reports handed out to the Commissioners – constantly inaccurate
- Vendors often bill the Town of Bridgewater – the district repays the town
- Excessive late fees paid due to late payments to vendors
- Hebron was not involved in the audit for 2008 – nor were we informed that the audit was taking place
 - Response to the audit was done by Bridgewater only
 - Hebron had to finally demand to see the audit
 - No input from Hebron was asked for until the reply had been completed



INSPECTIONS AND REPORTS FROM THE STATE OF NH DEPARTMENT OF ENVIRONMENTAL SERVICES

- Eleven violations going back to 2001 have not been resolved
- Currently under administrative order to address the violations
- Hebron is not notified when inspections or visits from DES are being conducted
- Follow-up requests from DES are not always forwarded to Hebron; therefore, Hebron is not aware of violations or requests from DES for permits, etc...

Operation Concerns

- OPERATING THE INCINERATOR INEFFICIENTLY – trash is not burned completely



IMPROPER INCINERATOR BURNING

- Efficient operation of the Incinerator
 - Ten tons of incinerated trash = One ton of Ash

*Note: KRAFT –
Mac & Cheese
box*



As a result of trash not being burned completely – the equation above is inaccurate.



OPERATING BUDGET

OPERATING BUDGET			
	GROSS OPERATING BUDGET		
FACILITY	OPERATIONS - includes MSW, C&D & other expenses	REVENUES - recyclables, user fees	NET OPERATING EXPENSES
Plymouth	\$ 319,000	\$ 287,000	\$ 32,000
Littleton	\$ 356,900	\$ 302,000	\$ 54,900
Lisbon, Lyme & Landaff	\$ 190,600	\$ 115,000	\$ 75,600
Lancaster	\$ 267,000	\$ 173,000	\$ 94,000
Franconia, Easton & Sugar Hill	\$ 240,000	\$ 144,000	\$ 96,000
Lincoln & Woodstock	\$ 299,500	\$ 79,500	\$ 220,000
Thornton, Campton & Ellsworth	\$ 364,500	\$ 80,500	\$ 284,000
Hebron-Bridgewater	\$ 535,030	\$ 35,030 included	\$ 535,030

CONSTANT FRUSTRATIONS



**ANY
SOLUTIONS
TO
PROBLEMS
THAT ARE
OFFERED BY
HEBRON ARE
QUICKLY
VOTED
DOWN BY A
TIE VOTE.**

BY HEBRON

POSSIBLE SOLUTIONS

Stay with the present arrangement



Cannot change anything due to tie votes and total control by Bridgewater.

Operate our own transfer station

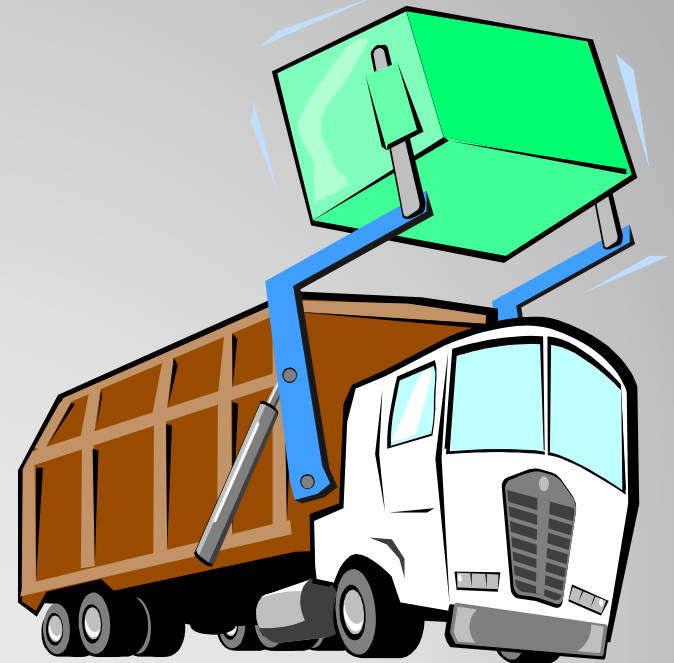
- Involves acquisition of property
- Capital outlay
- Payroll
- Operating expenses
 - Best guess would be around \$100,000 to \$150,000 annual cost plus



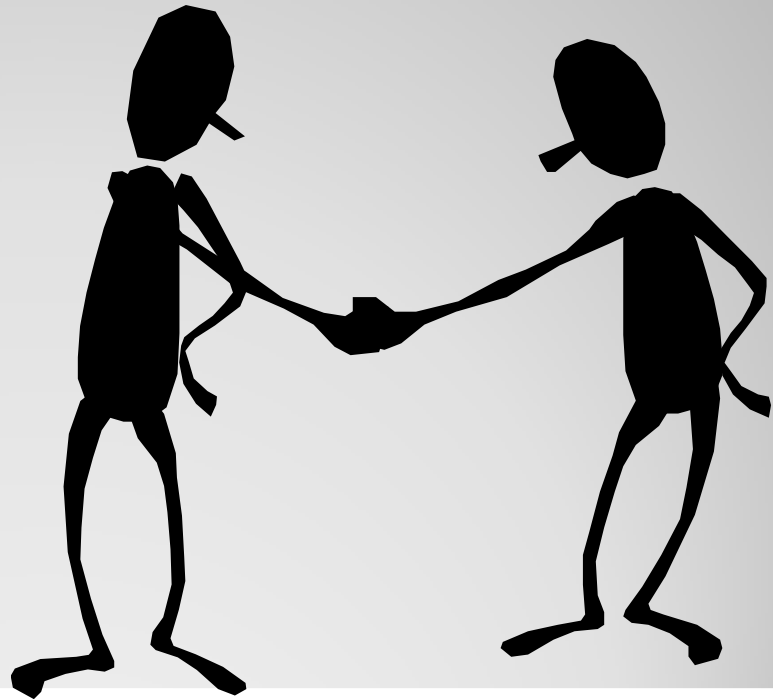
Individual curbside pick-up by private haulers

- Does Hebron want individual dumpsters scattered around town?
- Cost per individual would be significantly higher than other alternatives

PRIVATE HAULERS



Enter into agreement with Plymouth Refuse District



PROJECTED TOTAL HEBRON ANNUAL SAVINGS

COST TO HEBRON COMBINED WITH THE CURRENT BOND PAYMENT

Current Bond Payment = \$62,500

Annual Fee to Plymouth = \$51,025

Total Cost with Bond Payment = \$113,525

HEBRON CURRENTLY PAYS H-B DISTRICT \$250,000 PER YEAR

TOTAL ANNUAL SAVINGS

Including Bond Payment = \$136,475 per year

*Effect on the town portion of the Hebron Tax Rate =
\$.48(estimated)*

PLYMOUTH COMPARISON

\$250,000 per year to H-B District

\$51,025 per year to Plymouth

Location: Beech Hill Road

Days of Operation: Open every day except
Monday & Wednesday

Hours of Operation: 8:00 a.m. – 4:00 p.m.
Sunday 8:00 a.m. – 1:00 p.m.



QUESTIONS?

COMMENTS?